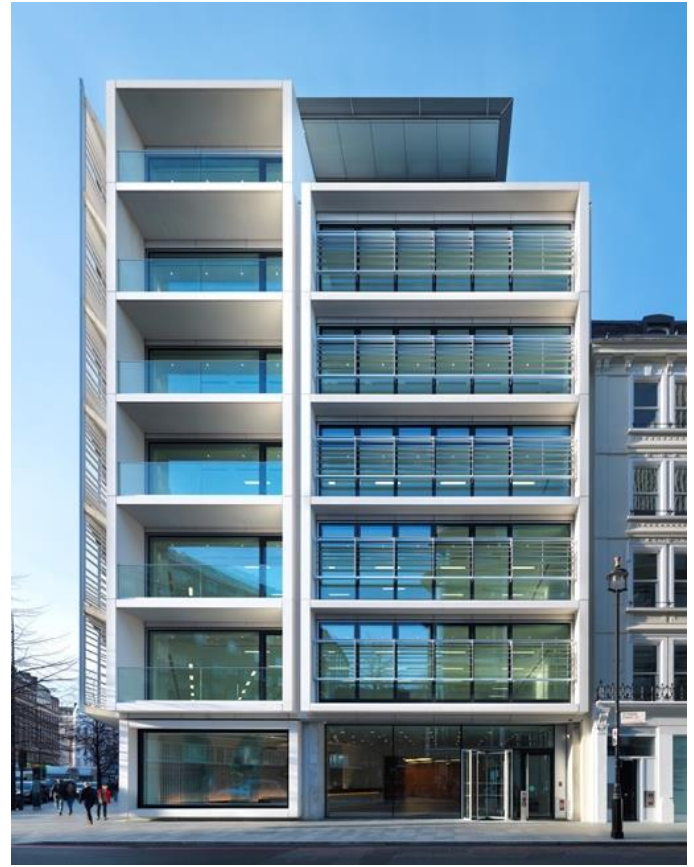


**Marble Arch House, 66 Seymour Street,
Marylebone, London, W1H 5BT**



FITTED GRADE A OFFICE FLOOR TO LET AS PART OR WHOLE
4th Floor | c. 5,000 / c. 6,000 / 10,226 sq ft



Location

Marble Arch House, developed by British Land in 2015 is located in the heart of Portman Village on Seymour Street and comprises seven floors of Grade A office space. It is conveniently situated within a minute walk to Marble Arch and 10 minutes to Bond Street tube station and also lies within close proximity to Paddington and Marylebone National Rail stations giving easy access to the Gatwick Express and imminently to Crossrail.

Portman Village offers a variety of unique independent bars, delis, restaurants and boutique shops. Additionally, Oxford Street is just moments away offering a wide selection of high street and designer brands, as is Mayfair for hotels, restaurants and bars.

Description

The 4th floor provides stunning high quality fitted office space accessed via a spacious manned reception and three 17 person passenger lifts. The space benefits from several private offices and meeting rooms, an impressive gym with showers and a generous café and break-out space with access to a large roof terrace. The building also has bike storage, showers, drying rooms and lockers in the basement.

The fit out is extremely impressive and this development is one of the very "best in class".

Floor Areas

Floor	sq ft	sq m
Part 4th Floor	c.5,000	465
Part 4th Floor	c.6,000	558
Whole 4th Floor	10,226	950
TOTAL (approx.)	10,226	950
*Measurement in terms of *NIA		

Marylebone

Bordered by Oxford Street to the south and running up to Regent's Park in the north, Great Portland Street to the east and Edgware Road to the west. Marylebone is characterised by grand Georgian streets and as a business location, Harley Street is best known as the centre of the medical world in London. In the 18th century various wealthy families owned much of the area and their names still adorn some Marylebone streets and squares, including Cavendish Square and Portman Square.

Jason Hanley, Partner

📞 020 7025 1391

Suzy Link, Senior Surveyor

📞 020 7025 8940

Georgia Mason, Agency Surveyor

📞 020 7025 8945

Applicants are advised to make their own enquires in respect of all rates payable to local authorities and taxes. We recommend you see www.voa.gov.uk for further information. None of the systems or services in the property have been tested by us to check they are in working order. Interested parties may wish to make their own investigations. All other information provided is for guide purposes and cannot be relied upon.

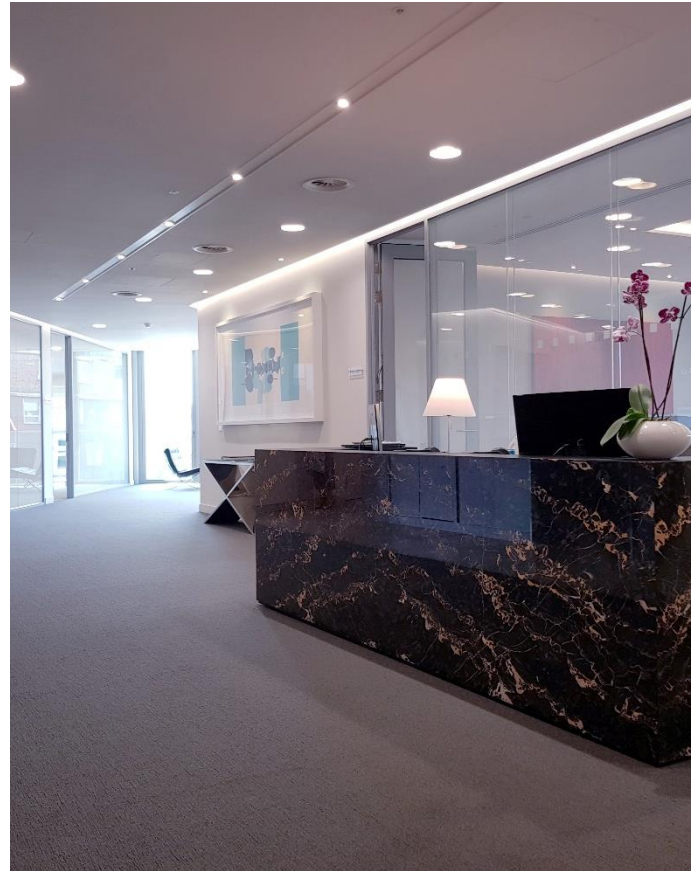
Subject to Contract February 2019

📞 020 7025 1390 🏠 4 Golden Square London W1F 9HT

**Marble Arch House, 66 Seymour Street,
Marylebone, London, W1H 5BT**



FITTED GRADE A OFFICE FLOOR TO LET AS PART OR WHOLE
4th Floor | c. 5,000 / c. 6,000 / 10,226 sq ft



Terms

Tenure:	Leasehold
Lease:	An assignment of the existing lease for the whole floor until February 2025 with a rent review February 2020. Alternatively a sub lease of approximately half the floor at an open market rent (on application).
Rent:	Passing rent £78.50 psf pax
Rates:	Estimated at £27.00 psf pa (2018/19)
Service Charge:	£13.49 psf pa (2019/20)
EPC Rating:	B

Amenities

- Two terraces with excellent views
- High quality fit out
- Impressive reception area with commissionaire
- Building has 74 bicycle spaces
- 4 basement showers & 3 further private showers on the 4th floor
- Drying room with lockers
- Three x 17 person passenger lifts
- 2.75m floor-to-ceiling height
- Fibre
- 4 pipe fan coil ceiling mounted air conditioning
- Liquid crystal privacy glass
- Fully fitted private 4th floor gym
- 'BREEAM Excellent' rating
- Generous kitchen and break out space with access to the terrace

Jason Hanley, Partner

📞 020 7025 1391
✉️ jhanley@monmouthdean.com

Suzy Link, Senior Surveyor

📞 020 7025 8940
✉️ slink@monmouthdean.com

Georgia Mason, Agency Surveyor

📞 020 7025 8945
✉️ gmason@monmouthdean.com

Applicants are advised to make their own enquires in respect of all rates payable to local authorities and taxes. We recommend you see www.voa.gov.uk for further information. None of the systems or services in the property have been tested by us to check they are in working order. Interested parties may wish to make their own investigations. All other information provided is for guide purposes and cannot be relied upon.



Monmouth Dean LLP for themselves and for the lessors or vendors of their property whose agents they are, give notice that: (i) These particulars are set out as a general outline only, for the guidance of intended purchasers or lessees, and do not constitute, nor constitute part of, any other offer of contract. (ii) All descriptions, dimensions, references to condition and necessary permission of use and occupation, and other details are given without responsibility, and any intending purchasers and tenants should not rely on them as statements or representative of fact, but must satisfy themselves by inspection or otherwise as to the correctness of each of them. (iii) No person in the employment of Monmouth Dean LLP has any authority to make give any representation or warranty whatever in relation to this property. (iv) Unless otherwise stated all rents and prices quoted are exclusive of VAT which may be payable in addition. Subject to contract.

Subject to Contract February 2019

📞 020 7025 1390 📍 4 Golden Square London W1F 9HT